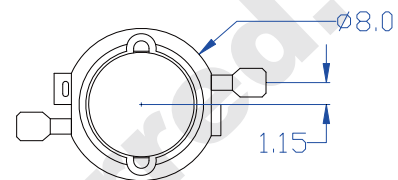
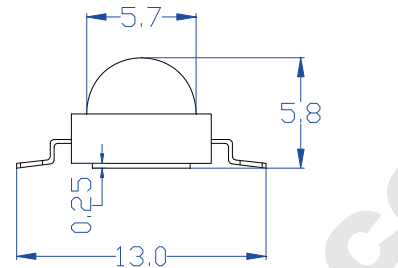


### Features:

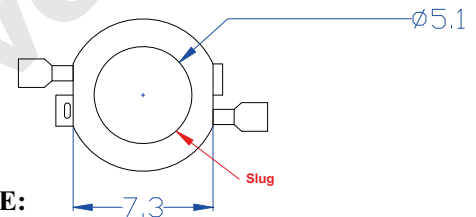
- Highest Flux
- High reliability and Very long operating life
- Low voltage DC operated
- More Energy Efficient
- NO UV
- Superior ESD protection
- RoHS Compliant

### Typical Applications:

- Reading lights
- Portable
- Automotive Exterior
- Decorative

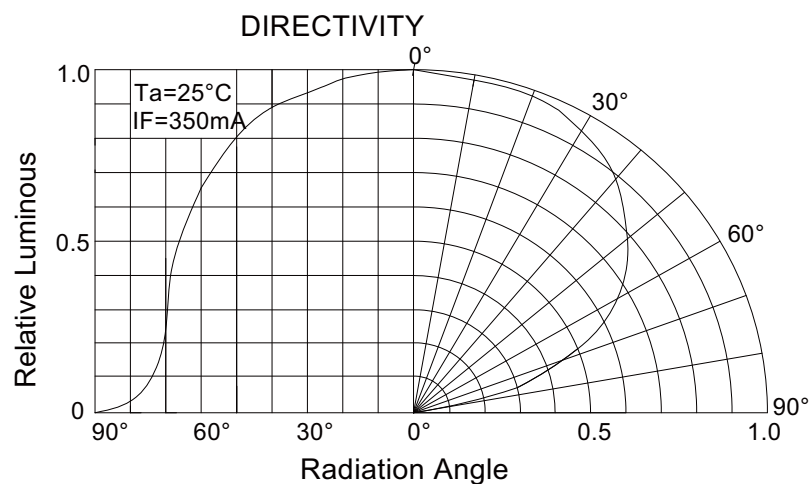


Anode(+) CathODE(-)



#### NOTE:

- All dimensions are millimeter.
- Tolerance is  $\pm 0.25\text{mm}$  unless noted



**Absolute maximum ratings (Ta = 25°C)**

Parameter	Symbol	Test Condition	Value		Unit
			Min.	Max.	
DC Forward Current	IF	----	----	350	mA
Peak Pulse Current	Ipeak	Duty=0.1mS, 1kHz	----	500	mA
Power Dissipation	Pd	----	----	1.4	W
LED Junction Temperature	Tj	----	----	120	°C
Operating Temperature	Topr	----	-25	+100	°C
Storage Temperature	Tstr	----	-40	+120	°C
ESD Sensitivity	---	HBM	8000	---	V

**Electrical and optical characteristics (Ta = 25°C)**

Parameter	Symbol	Test Condition	Value			Unit
			Min.	Typ.	Max.	
Forward Voltage	VF	IF = 350mA	2.2	2.6	3.5	V
Luminous Flux	Φv		30	40	----	lm
Viewing Angle	2θ 1/2		----	140	----	Deg.
Dominant Wavelength	λd		585	----	595	nm

**Luminous Flux Bins (Ta = 25°C)**

Unit:lm

Bin	G	H
Min	30	40
Max	40	50

**Note**

1. Flux is measured with an accuracy of ±15%
2. CCT is measured with an accuracy of ± 200K
3. Forward Voltage is measured with an accuracy of ± 0.15V